



# FOAM **FIREBLOCK**

**FIRE-RESISTANT FOAM SEALANT**

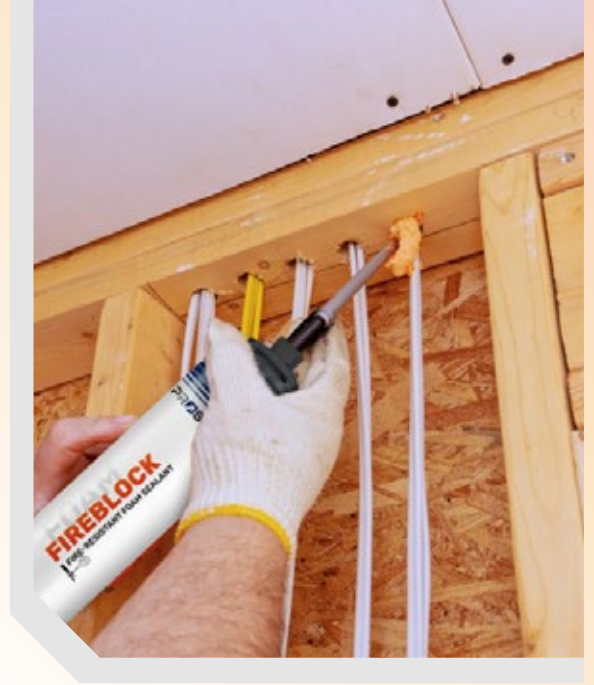
**POLYURETHANE FOAM SEALANT**



- ✓ FIRE-PROTECTION
- ✓ WATER-RESISTANT
- ✓ HIGH-EXPANSION
- ✓ STRONG ADHESION

# STRONG. RELIABLE. FIRE-BLOCKING.

ProSource FireBlock is a high-expansion polyurethane foam sealant designed to help block the passage of fire, smoke, and gases through concealed spaces and penetrations. It provides an airtight and water-resistant seal around plumbing, electrical, and HVAC applications.



COVERAGE  
**900**  
FT  
( $\frac{1}{2}$  IN BEED)

R-VALUE  
**4-5**  
(PER INCH)

## APPLICATIONS



**WINDOW  
FITTINGS**



**DOOR  
FITTINGS**



**GAPS &  
CRACKS**



**WALL & FLOOR  
JOINTS**



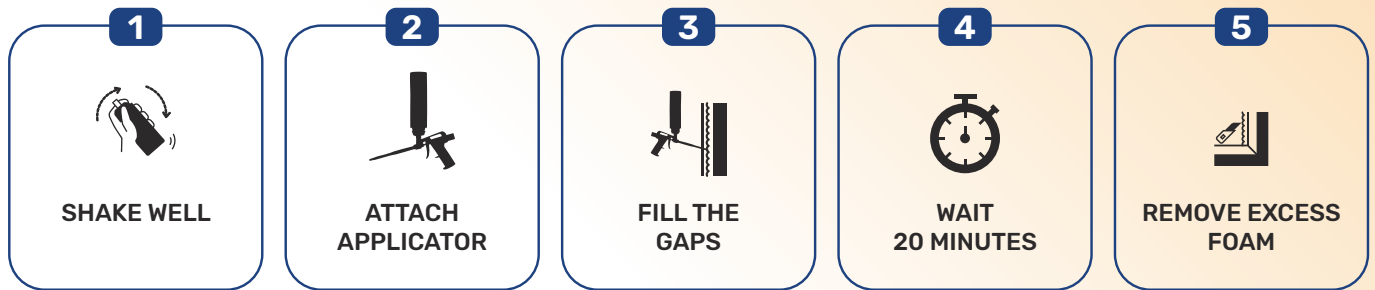
# TECHNICAL DATA SHEET

This technical data sheet describes the typical properties and performance characteristics of prosource fireblock b2 fire-stopping polyurethane spray foam.

SPECIFICATIONS		(TEST CONDITIONS: 73°F (23°C) / 50% RELATIVE HUMIDITY)
PARAMETER		VALUE
NOMINAL VALUE [OZ]		24 OZ
YIELD USING 1/4" BEAD [FT]		4,144 FT
YIELD USING 1/2" BEAD [FT]		1,036 FT
SKIN FORMATION TIME (EN 17333-3,2020) [MIN]		≤ 10 MIN
CUTTING TIME (EN 17333-3,2020) THE RESULT GIVEN FOR A FOAM STRIP OF 3 CM DIAMETER. [MIN]		≤ 40 MIN
FULL CURE TIME (RB024) [H]		24 H
DIMENSIONAL STABILITY (EN 17333-2,2020) [%]		≤ 5 %
FLAME SPREAD / SMOKE DEVELOPED ((UL723 (ASTM E84))		15 / 10
R VALUE (PER INCH)		4 - 5
CAN / APPLICATOR TEMPERATURE (OPTIMUM 68°F)		41 - 86 °F
AMBIENT / SUBSTRATE TEMPERATURE		-4 - 100 °F



## HOW TO USE



## MATERIAL BONDING



## WORKS AFTER COMPLETION OF APPLICATION

Allow the foam to fully cure before trimming or finishing. Excess material should be trimmed only after the product has completely set. Cured foam must be protected from prolonged UV exposure by covering, sealing, or painting. Clean tools and applicators immediately after use with an approved foam cleaner. Dispose of waste materials and empty containers in accordance with local environmental regulations.

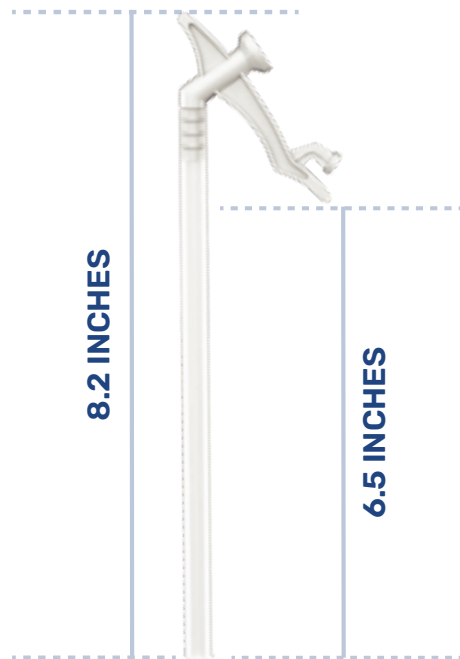


# PACKAGING & CONTENTS

Supplied in a full carton containing 12 cans, each pre-packed with an included applicator straw. The straw allows direct, controlled dispensing without the need for additional tools, making the product ready for immediate use on site. Cartons are supplied complete and are not broken into individual units.



# 12X STRAWS FOAM CANS



# PROSOURCE FOAM SEALANT PRODUCT FAMILY

ProSource offers a complete range of professional-grade foam sealants, engineered for different applications while maintaining superior performance and reliability.



**FIREBLOCK**



**WINDOW+DOOR**



**FOAM CLEANER**

**SEAL. SECURE. PERFORMANCE.**



## YOUR TRUSTED INSULATION SUPPLY PARTNER

Prosource Insulation is a leading supplier and distributor of insulation products and building materials to residential and commercial contractors throughout California.

**10+**

Years in Business

**1K+**

Tons of Material

**2K+**

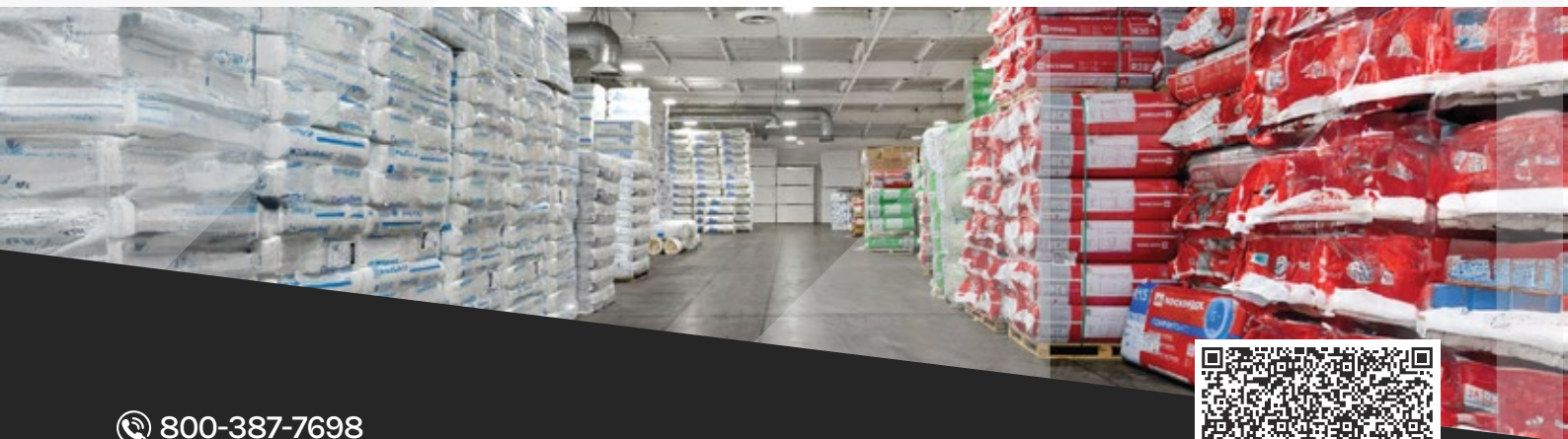
Happy Contractors

**25K+**

Trucks Delivered

“At Prosource Insulation, we believe the best partnerships are built on trust, and we’re here to earn it every day.”

”



800-387-7698

ProsourceInsulation.com

21314 Lassen St, Chatsworth, CA 91311

